

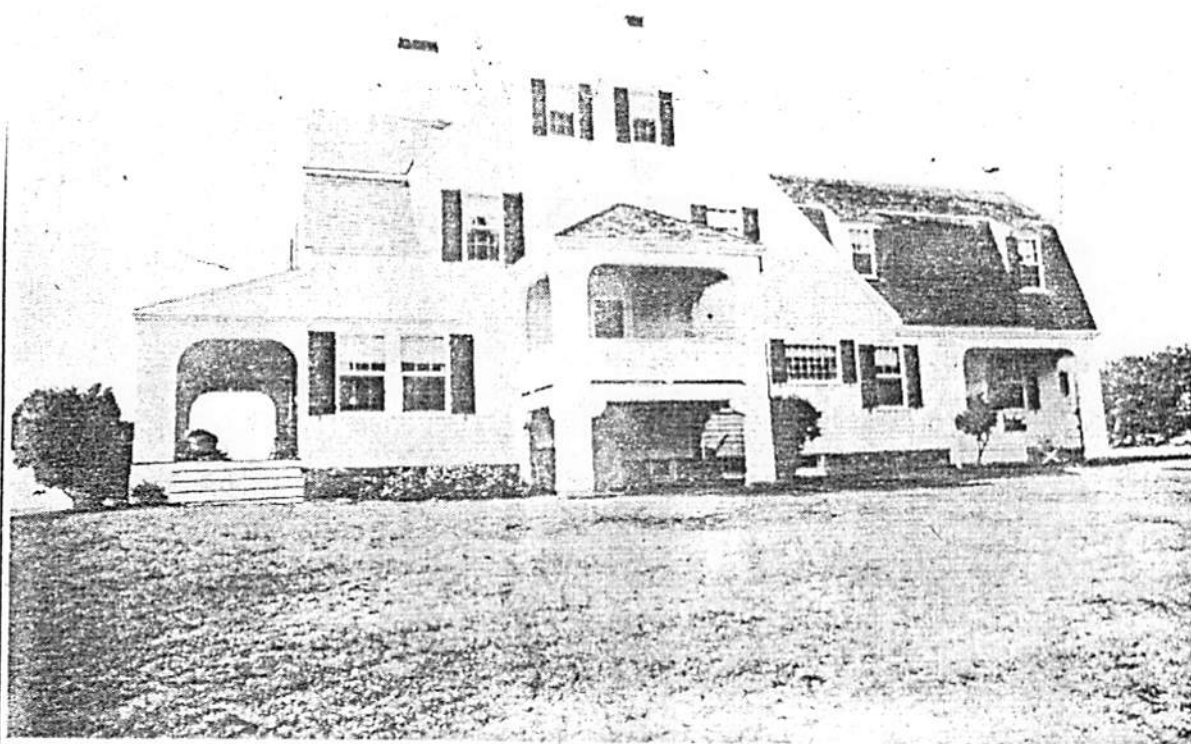
Clark's Island — 1976

242

The late Capt. Albert Franklin Pierce of Lincoln Street was a great teller of tales of the Gurnet, Saquish and Clark's Island. At the age of 92 in 1969, Pierce told Geller the story about his nephew, Arthur Hughes, who assisted caretaker Kendrickl Tribou.

"One night," Pierce said, "when they took the cows to the little pond for water, they saw two of the largest water snakes. Arthur got his gun and shot them. They were copper bellies and measured about four feet long. How did they ever get down there? I saw the

largest black (snake) in the little cemetery while picking blackberries. The Watsons raised a lot of hay, and had a baler in their barn to bale up the hay. I have seen the old cat boat piled up three tier high taking it to Plymouth." (Photo loaned by Maggie Mills, who wrote the text.)



Watson estate, Clark Island — 1975

In June, 1976, the realtors put up for sale the Watson estate on Clark's Island. Known as one of the prettiest parcels on the island, this was the same ground where Henry David Thoreau, Louisa May Aicott, and Harvard presidents Eliot and Lowell, in addition to other famous Americans, explored during their lifetime — so the story goes.

This estate occupies all of the southern end of the island. The owner in 1976 was Howard Watson, a member of the famous New England yachting and seafaring family. It had been in the Watson family for almost three centuries.

The 12-room Dutch Colonial house was designed in 1825 by Van Brunt and Hower, Boston architects for the scholar William Watson Goodwin, then head of Harvard's Greek department.

The main house consists of a living room and library, both with fireplaces; a dining room with built-in and hand-carved corner cupboard, a large kitchen, two pantries, a family room and two half-baths on the first floor. There are four master bedrooms and a maid's room with a separate staircase on the second floor; and two bedrooms on the third floor. Large

covered verandas run on three sides of the house.

There is a large storage basement and hot water and refrigeration services by bottle gas. On the shore, close to a new 120-foot dock is a boathouse converted into a guest house. The channel on the west side, adjacent to the property is ample for large yachts at any tide.

Present owners of the Watson estate are John W. and Susan S. Baker of West Acton who purchased the estate in 1979. (Photo loaned by Maggie Mills, who wrote the text.)